

A photograph of a courtyard at night. A large crowd of people is gathered, some sitting at tables with drinks, others standing and talking. In the background, a multi-story building is illuminated with vibrant, colorful light projections in shades of blue, green, and purple. String lights are strung across the courtyard, and the sky is dark with some clouds.

The Art School Venue Information 2023

Glasgow School of Art
Students' Association

Contents

The Assembly Hall	3
Vic Café Bar	5
Green Room & Production Office	8
Project Spaces 1, 2 & 3	9
Equipment Inventory	10
Catering	12

Overview

'The Art School', as it is known colloquially, is the historic venue of the Glasgow School of Art's Students' Association (GSASA) and sits directly opposite the world famous **Charles Rennie Mackintosh building** on Renfrew Street in the *Garnethill* area of Glasgow. The building was originally built in the 1930s as a formal assembly hall for the Glasgow School of Art by the same architects, John, Keppie & Henderson, who worked alongside Mackintosh on our illustrious neighbour.

The building has been used since the 1970s as the home of the Students' Association and slowly built a reputation as one of the era-defining spaces in the city for the emergence of new acts and genres of music. From hosting The Clash in the late 80s to facilitating the rise of electronic music in the 90s, it underwent a substantial refurbishment to **open in its current form in 2014**. Since then it has hosted household names from **FFS (Franz Ferdinand & Sparks)**, **Thurston Moore (Sonic Youth)** and **Peaches**, to breakthrough artists such as Julia Holter, Skepta and **Honeyblood**.

The GSASA is a registered charity, SCO44061, with all profits re-invested into funding non-commercial creative projects and the running of the venue. We have a large team of professionally trained staff, which encompasses bar and event management, bookings and programming, a large catering operation and highly experienced technical production engineers. We are flexible and open-minded, so please don't hesitate to get in touch to discuss the possibilities.

Assembly Hall

The 500 standing capacity assembly hall is the main hireable space at 270m², hosting a regular weekly programme of high-profile touring gigs, club nights, film-screenings, theatre shows, talks, workshops and occasional art installations. It boasts the best audio-visual specification for a venue of its size in Scotland, with a flown D&B loudspeaker system, over-floor and over-stage motorised truss, movable 2 x 3m FOH position and a large array of effects lighting. It is available for hire throughout the week with gigs and club nights prioritised in the evenings.



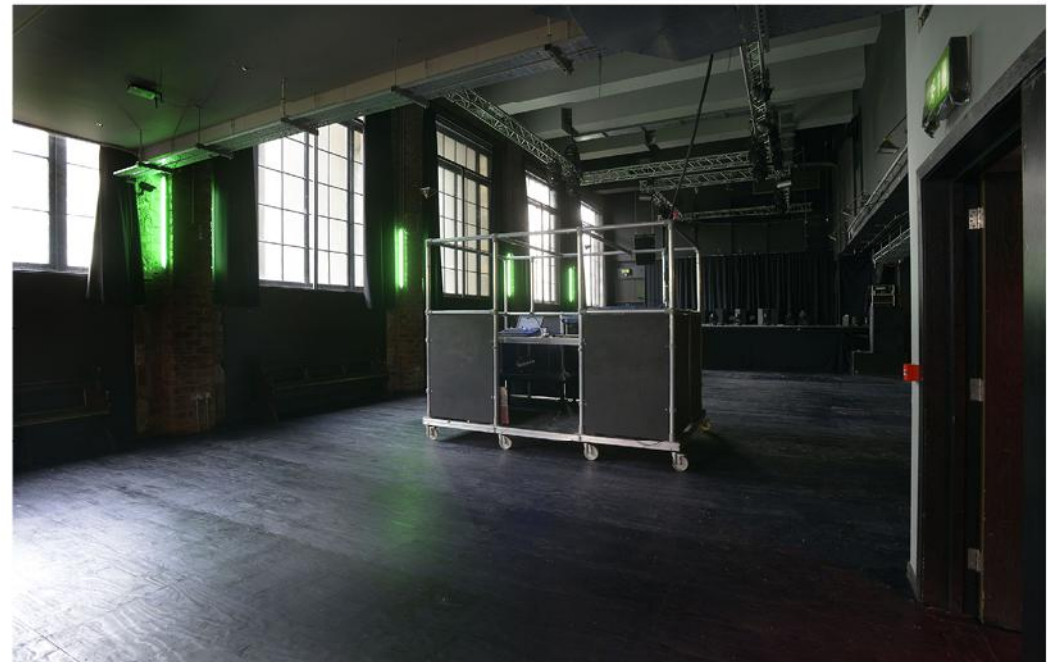
Golden Teacher performing at 2014 Degree Show Party



Freaky Freaky, club-night featuring Eclair Fifi and S-Type, 2015



Looking south towards bar with FOH to the side



Looking north towards stage with FOH in middle

Assembly Hall

Key Info

Power

63A TP

32A TP

32A

16A — numerous on truss and stage

13A — on stage, at FOH and around the venue

Dimensions

Stage — (Note that useable stage space is smaller than the size of the stage on the drawing on the right, due to immobile equipment on stage.)

6.1m (w) x 4.2m (d) x 1.3m (h)

Over-stage motorised truss — 3.7m (w) x 4.95m (d)

Over-FOH/ —dancefloor motorised truss — 4.7m (w) x 8.7m (d)

Height from dancefloor to truss — 5.5m

Height from stage to truss — 4.25m

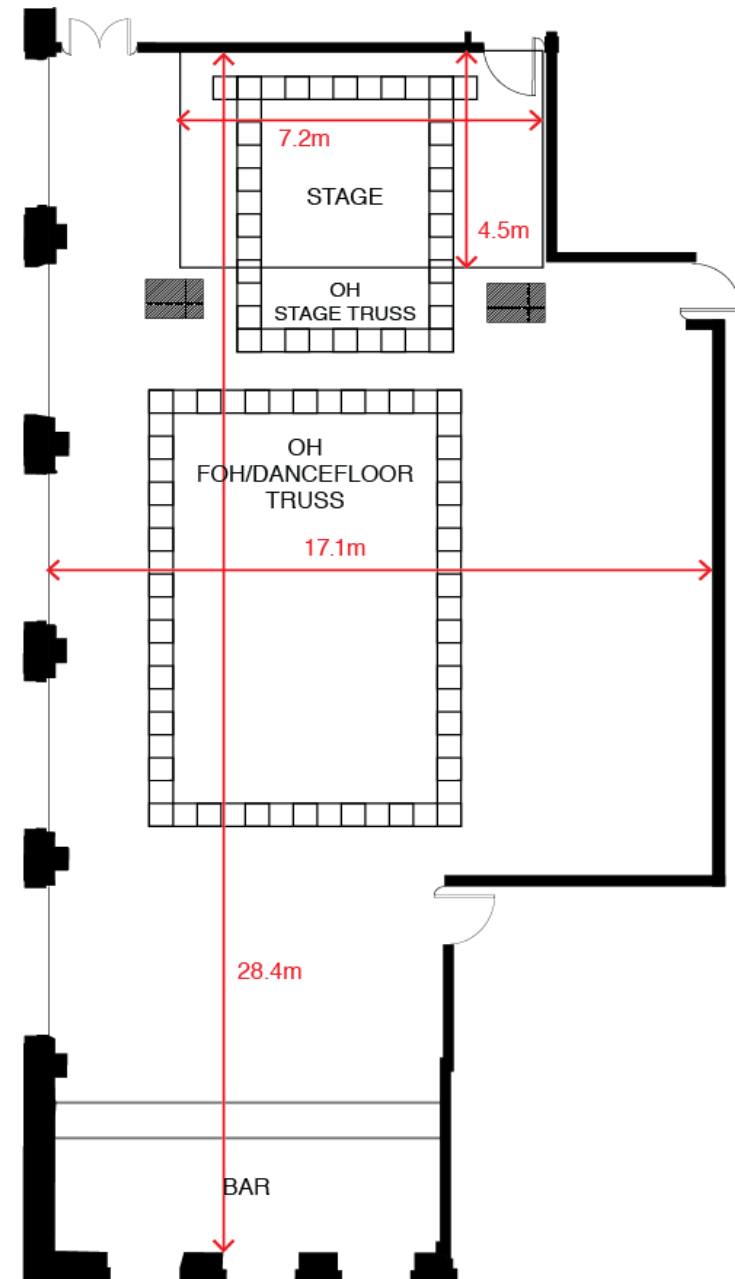
Access

Lift in foyer — 1.1m (w) x 1.4m (d) x 2.1m (h), 0.9m Door Width,
630 Kg max load

9-step double door fire escape onto Scott St.

Blackout

Black wool serge track curtains



Vic Café Bar

'The Vic' is the heart of the Glasgow School of Art campus and was set up in the 70s from the salvaged remains of the Victoria Café, which was originally in the Southside of Glasgow. The refurbished art deco virtuoso marbled sign still hangs in the café today. Open 6 days a week with a relaxed and informal atmosphere, it serves a well-received street-food-inspired menu with a well-stocked bar.

VIC CAFÉ BAR
GLASGOW SCHOOL OF ART STUDENTS' ASSOCIATION



Build up to 2016 Degree Show



Diners in the Vic Bar, 2014



Looking south to the Victoria Cafe sign



Looking north towards the stage area

Vic Café Bar

Key Info

Spare Power

63A TP

32A TP

32A

16A — numerous on rigging bars and side of stage

13A — side of stage, at FOH and around the room

Dimensions

Stage — 3.65m (w) x 2.44m (d) x 0.3 (h)

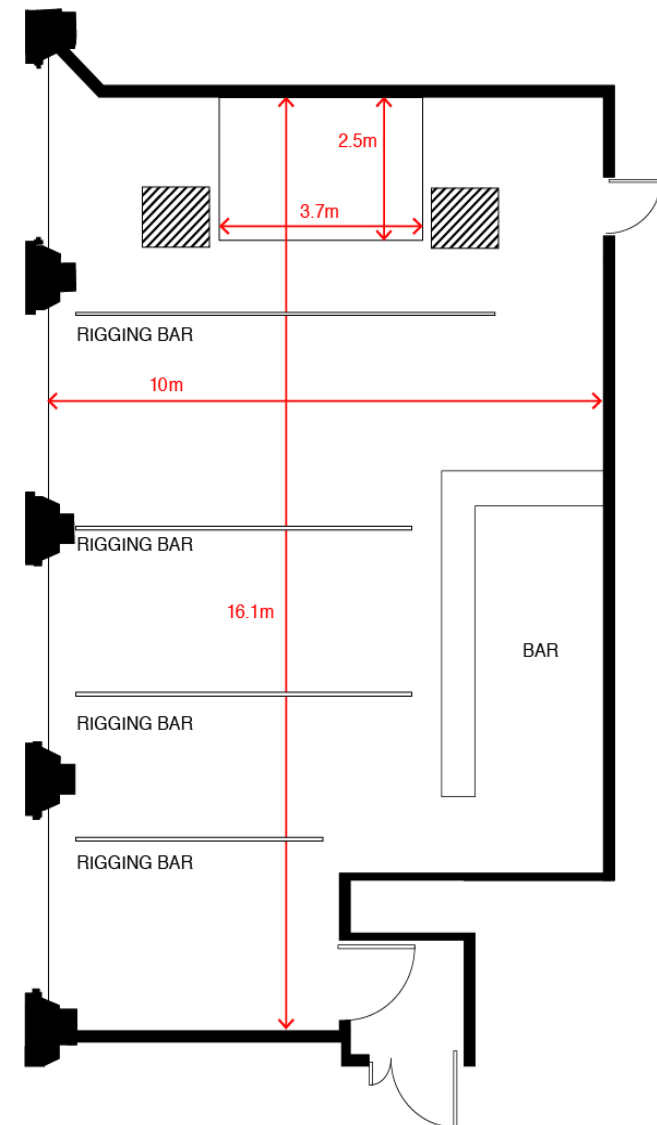
Rigging bar height — 3m

Access

Ground floor level access

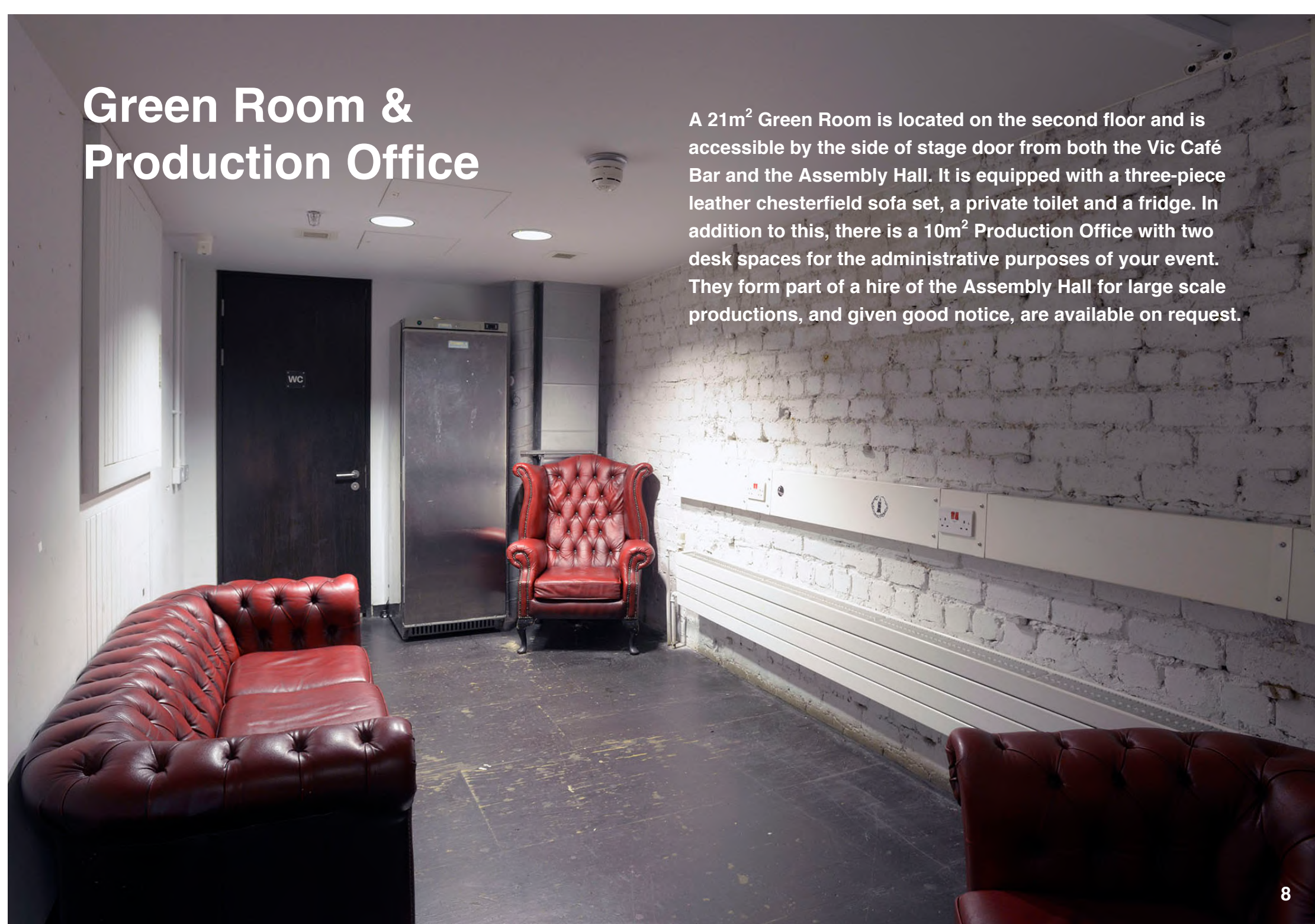
Blackout

Black serge track curtains wool



Green Room & Production Office

A 21m² Green Room is located on the second floor and is accessible by the side of stage door from both the Vic Café Bar and the Assembly Hall. It is equipped with a three-piece leather chesterfield sofa set, a private toilet and a fridge. In addition to this, there is a 10m² Production Office with two desk spaces for the administrative purposes of your event. They form part of a hire of the Assembly Hall for large scale productions, and given good notice, are available on request.

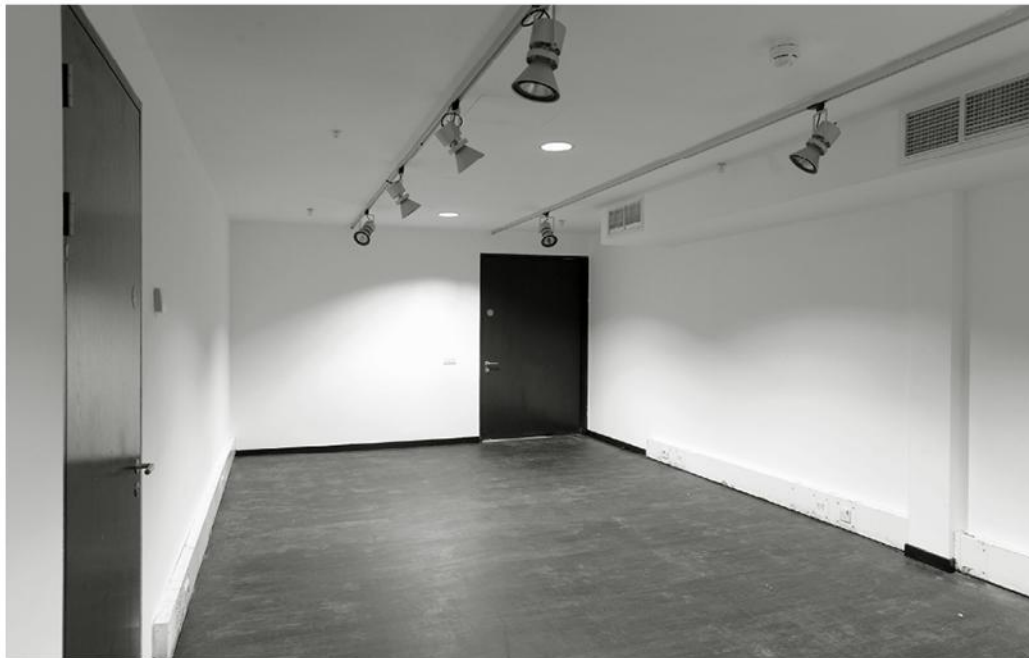


Project Spaces 1 and 2

In addition to the Assembly Hall and Vic Café Bar, the building also has two Project Spaces on the second floor of 35m² and 27m², as well as a smaller 10m² space on the ground floor. All spaces are publicly accessible from the main entrance hall and stairwell. They are used extensively for student-initiated projects throughout the academic term, but are available from time to time and during the summer recess. They are commonly used for small-scale talks, meetings and presentations.



Project space 1, looking west



Project space 2, looking north



Project space 3, looking south

Equipment Inventory

Assembly Hall

FOH PA

4x D&B Qi1 NL4 (flown)
2x D&B Qi7 NL4 (flown)
4x D&B V-Sub NL4
2x D&B B2 NL4
5x D&B D12 NL4 amplifiers

FOH Control

1x Midas Pro 2 console with DL 251 stagebox

Monitors

6x Tannoy V15 — up to 6 mixes from FOH
1x Midas Pro 1 console from Vic Bar can be used when available*

Lighting

1x Chamsys MQ60 console
12x Chauvet Rogue R1 spot
6x Chauvet Trio Wash
2x Martin Rush MH3 beam
8x Robe LED Force Par18 RGBW
1x Jem ZR44 smoke machine
3x DMX lines run to stage
2x DMX lines run to each truss
1x Martin Pro RDM 5.5 DMX splitter

Video

1x 4m x 2.5m 16:10 motorised projection screen
VGA and Composite (BNC) from FOH
VGA, HDMI, Ethernet and Composite (BNC) from stage

Crowd Control

6x Aluminium collapsible crowd barrier units — 1m (w) x 1.2m (h)

Vic Bar

FOH PA

2x Tannoy VQNet 60
4x Tannoy VNet 218DR

FOH Control

1x Midas Pro 1 console with 2x DL153 stagebox

Monitors

2x QSC K12 or 2x Tannoy V15

Lighting

1x Chamsys MiniWing + touchscreen PC
6x Chauvet Intimidator 350 spot
8x Martin Rush MH2 Wash
6x Lanta Fireball DMX RGB par can
2x Sistemi Luce Random Scan
2x Optikinetics Solar 250 effects projector
1x Magnum 1800 smoke machine
1x Martin Pro RDM 5.5 DMX splitter

Fixed aluminium rigging bars with 16A power and DMX throughout venue

Video

VGA and Composite (phono) to both front and rear of the room from side of stage

1x 3m x 1.6m 16:9 manual roll down screen

1x 2m x 1.5m 4:3 manual roll down screen

Shared (check availability)

Lighting

10x Showtec Sunstrip

4x Chauvet Xeno 2500 strobes

2x 400w UV cannon

1x Le Maitre MVS hazer machine

Video

2x Benq W770ST 2.5k lumen short throw projector

DJ

2x Pioneer DJM-900 Nexus mixers

6x Technics SL1210 Mk2 turntables

4x Shure Whitelabel cartridges

4x CDJ 2000 NXS

2x Pioneer CDJ-1000 Mk3

N.B. various costs are associated with the temporary supply and installation of the above-listed equipment, which are worked out on a case by case basis.

Catering

Our dedicated catering team is responsible for a large proportion of the catering across the Glasgow School of Art campus as well as catering for internal events from conferences to weddings. We have a number of set menus to suit all events and requirement, however, if you are looking for something in particular, we can work with you to create a bespoke menu to suit your needs and your budget. Please don't hesitate to contact us if you have any questions: gsasa@gsa.ac.uk



Further Info

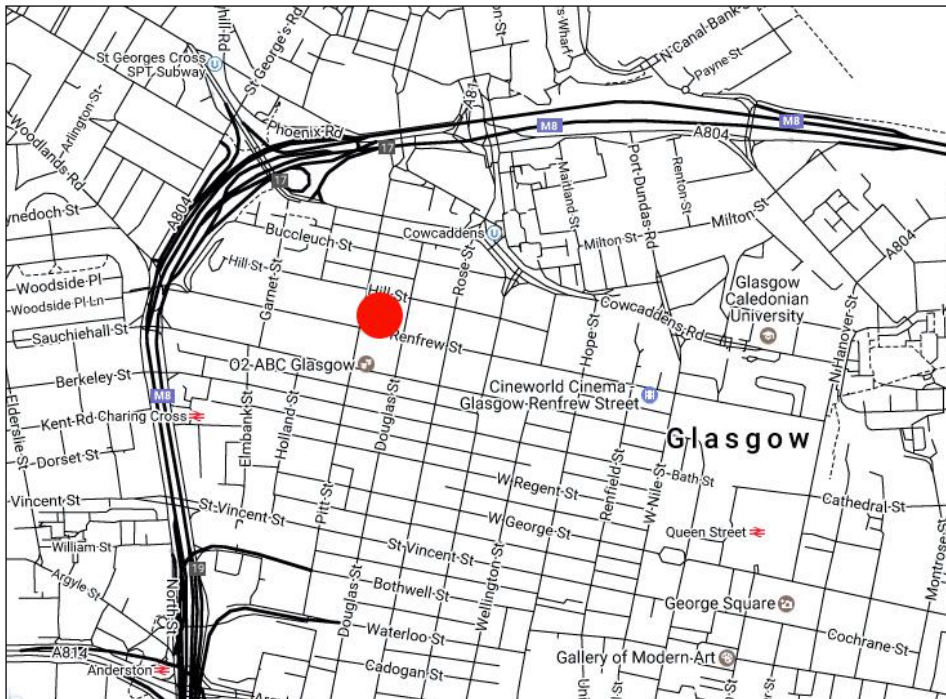
Getting To Us

Glasgow International Airport — 13min drive

Central Station, Glasgow Queen Street — 15min walk

Charing Cross Glasgow — 8min walk

Cowcaddens Subway Station — 5min walk



Parking

There are metered parking bays opposite the venue on Scott St. and several local car parks. With advance notice, we are able to supply 16 Amp power for tour buses and parking directly in front of the venue on Renfrew Street.

Accessibility

The Art School is a wheelchair accessible venue to all members of the public. Our stage and backstage facilities at the rear of the venue are not readily wheelchair accessible, but arrangements can be made with sufficient advance notice.

Contact

gsasa@gsa.ac.uk

Quotations for hire are only offered on a case by case basis, as each type of usage is invariably unique.

Photo Credits

Alan Dimmick, Gordon Bannatyne, Beth Chalmers, Jackson Tucker Lynch & Joshua Hill

Graphic Design & Layout

© Malcolm Murdoch of A Day Out